



Flowering rush
(*Butomus umbellatus*)

- Up to 5 ft. tall
- Aquatic perennial
- Blooms late summer
- Flowers 1 in. wide
- Leaves basal, sword-like & up to 3 ft. tall by ½ in. wide
- Thick, creeping rhizomes
- Stems triangular
- Fruits brown, ½ in. long
- Tolerant to a wide temperature range



Asian Mustard
(*Brassica tournefortii*)

- 18-36 in. tall; basal rosette up to 36 in. wide
- Plants set seed prior to April
- Seed pods up to 2 ½ in. long
- Basal rosette leaves hairy; pinnately lobed & with toothed margins
- Seeds light reddish brown or black



Garlic mustard
(*Alliaria petiolata*)

- 1-4 ft. tall
- Herbaceous biennial
- Blooms early spring
- Flowers small; 4 white petals
- Rosette leaves 1-6 in. & heart-shaped
- Mature seeds shiny black in erect, slender green pods that turn pale brown
- Garlic odor when plant parts crushed
- Highly shade-tolerant



Baby's breath
(*Gypsophila paniculata*)

- 12-18 in. tall & up to 16 in. wide
- Blooms summer through fall
- Flowers clustered, delicate, white or pink, 5-parted
- Leaves linear-lance-shaped, hairy, opposite; ¾ to 4 in. long
- Seed capsules egg-shaped, less than ¼ in., very small & blackish



Hairy willow-herb
(*Epilobium hirsutum*)

- 3-6 ft. tall; perennial
- Blooms June to August
- Flowers single, 1/2 to 1 in.
- Stems covered in soft hairs
- Seeds with white silky tuft in long seedpod
- Leaves ½ in. wide, 2-4 in. long, opposite, lance-shaped with toothed edges; attached directly to stem
- Numerous native species are found in CO wetlands



Brazilian Elodea
(*Egeria densa*)

- Up to 6 ft. long; dense submerged aquatic perennial
- Can live rooted or free floating; up to 20' deep
- Flowers emergent on stalks with 3 white petals & 3 green sepals
- Bright green leaves in whorls of 4; linear, oblong, 1¼" w/ very finely toothed margins
- Fragmented pieces can produce new plants



Himalayan blackberry
(*Rubus armeniacus*)

- Up to 15 ft. tall
- Thicket-forming shrub
- Blooms late spring to summer
- Flowers 1 in. in groups of 3-20
- Compound leaves dark green above & pale to whitish below; leaves on 1st year shoots have 5 leaflets & leaves on 2nd year side shoots have 3 leaflets



Cogongrass
(*Imperata cylindrica*)

- Up to 6 ft. tall
- Colony-forming
- Flowers 2-8 in.; fuzzy
- Leaves ½ to ¾ in. wide with off-center whitish midrib, finely serrated margins & a sharp, pointed apex
- Rhizomes whitish, scaly & sharp



Meadow hawkweed
(*Hieracium caespitosum*)

- 1-3 ft. tall
- Blooms late May to June; flower heads in tight clusters; 5-30 heads per stem
- Leaves mostly basal; lance shaped, up to 6 in. long & hairy; form dense mat at base
- Stems, leaves & bracts have dense blackish hairs & exude milky sap when broken



Common bugloss
(*Anchusa officinalis*)

- 1-2 ft. tall by 1-2 ft. wide
- Blooms June to October
- Flowers ½ in. bright blue to purple with white throats
- Stems & leaves fleshy & hairy
- Leaves narrow & slightly pointed; alternate & get smaller up stem
- Fruit 4-chambered nutlet, 1 seed each



Onionweed
(*Asphodelus fistulosus*)

- 1 ½-2 ½ ft. tall tufted clumps
- Blooms July through August
- Flowers ¼ to ½ in. wide
- Stems branched & hollow
- Leaves 3-14 in. long by ¼ in. wide
- Doesn't smell like onion & doesn't form bulb
- Seeds triangular in cross-section; sharp edges



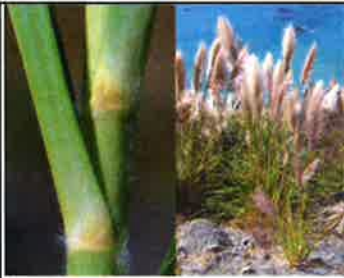
Common reed
(*Phragmites australis*)

- 6-15 ft. tall perennial grass
- Spreads by rhizomes
- Forms dense thickets in or near water
- Blooms July to October
- Flowers feathery & drooping; can appear silvery or purplish
- Leaves blue-green, flat, smooth
- Native species of Phragmites also exist in Colorado



Parrotfeather
(*Myriophyllum aquaticum*)

- Dense aquatic perennial with both submerged & emergent leaves
- Emergent leaves bright blue-green; submerged darker; 4-6 whorled at each node
- Emergent stems grow up to 1 ft. above water
- Flowers may occur; if so, white & 1/16 in. long
- Spreads by plant fragments



Purple pampasgrass
(*Cortaderia jubata*)

- 1-2 ft. tall by 1-2 ft. wide
- Blooms June to October
- Flowers 1/2 in. bright blue to purple with white throats
- Stems & leaves fleshy & hairy
- Leaves narrow & slightly pointed; alternate & get smaller up stem
- Fruits are 4-chambered nutlets with 1 seed each



Scotch broom
(*Cytisus scoparius*)

- 7 ft. tall by 3 1/2 ft. wide
- Blooms late spring to early summer
- Flowers 1 in. & pea-like
- Trifoliate leaves dark green above; paler & fuzzy below; alternate & pinnately compound; 1/2-1 in. wide
- Grooved stems up to 2 in. wide
- Flat seedpods with small black seeds



Sericea lespedeza
(*Lespedeza cuneata*)

- 3 to 6 ft. tall
- Blooms summer to fall
- Flowers in clusters of 2-4
- Leaves thin, alternate, abundant & three-parted; leaflets 1/2-1 in. with wedge-shaped bases; hairy
- One to many slender stems



Spiny cocklebur
(*Xanthium spinosum*)

- 1-4 ft. tall by 1-4 ft. wide
- Blooms June to July
- Flowers 1-1 1/2 in.; creamy green
- Stem straight & rigid
- Leaves alternate, up to 3 in. long & 1 1/2 in. wide; 3-lobed; shiny
- Female flowers become burrs which are the fruits; egg-shaped



Swainsonpea
(*Sphaerophysa salsula*)

- Up to 5 ft. tall
- Blooms May to June
- Flowers 1/4-1 in. long, pea-shaped, & in groups of 4-8
- Leaves compound pinnate, alternate; 9-25 oval leaflets with silvery hairs
- Seeds form in inflated bladder-like pods
- Woody taproot with spreading rhizomes



Syrian beancaper
(*Zygophyllum fabago*)

- Up to 3 ft. tall by 3 ft. wide
- Blooms May to August
- Flowers can be white, yellow or salmon color & have 10-12 orange stamens
- Stems succulent & multi-branched
- Leaves opposite, compound & with 2 thick, fleshy leaflets



Water hyacinth
(*Eichhornia crassipes*)

- Up to 3 ft. tall; dense floating aquatic
- Forms dense thickets in water
- Blooms July to October
- Flowers 2 in. wide in clusters at the end of a 12-in. spike
- Leaves dark green, 1 1/2 to 4 1/2 in. wide & 6 in. long
- Feathery roots



Water lettuce
(*Pistia stratiotes*)

- 2-3 ft. tall; dense floating aquatic
- Blooms late summer to winter
- Flowers inconspicuous; clustered on small, fleshy stalk in leaf axils
- Leaves velvety, hairy, spongy & in rosettes; 6 in. long; connected by short stolons
- Roots numerous & feathery



White bryony
(*Bryonia alba*)

- 12 ft. long or more; vigorous vine; can grow 6 in. per day
- Blooms mid-summer
- Flower 1/2 in. wide & greenish-white
- Leaves are dark green and palmately lobed; each has a corkscrew tendril for climbing
- Highly toxic seeds in round, black fruit
- Forms dense mats & shades out vegetation



Woolly distaff thistle
(*Carthamus lanatus*)

- 3 1/2 ft. tall
- Blooms July to August
- Flowers 1-2 in. wide with spiny bracts
- Pale green stems hairy, rigid, upper portion branched
- Plants persist upright after they have died
- Flowers similar to yellow starthistle



Yellow flag iris
(*Iris pseudacorus*)

- 3-4 ft. tall wetland perennial
- Blooms late spring to early summer
- Flowers bright yellow with 3 drooping sepals & 3 smaller, upright petals, 3 in. wide & in groups of 2-10
- Leaves arise from base, flat with raised mid-rib; rhizomes grow up to 20 ft.
- Fruits occur as 2 in. brown capsules



Yellowtuft
(*Alyssum murale* & *A. corsicum*)

- Perennial forbs
- Adapted to serpentine soils
- Flowers are yellow, small & plentiful, occurring on branched umbels
- Bloom early summer
- Fruits are papery, circular to oval and flattened
- A. murale* has narrow, gray-green leaves & *A. corsicum* has oval silvery-gray leaves



Yellow floatingheart
(*Nymphoides peltata*)

- Floating aquatic perennial
- Carpets water surface with long-stalked, heart-shaped, opposite & unequal leaves; 2-6" long & wide; arising from rhizomes
- Flowers bright yellow; 2-5 per stalk; 1" in diameter; 5 petals with fringed edges
- Flowers June to September
- Seeds flat & oval in shape; contained in beaked capsule