

### MAIN ARENA AND GRANDSTAND

- ✓ Lighted for night time activities
- ✓ Features chutes and pens for livestock
- ✓ Access to electrical service and water
- ✓ Seating for 4,460
- ✓ 70' by 250' exhibit area under grandstand
- ✓ Rodeo and roping chutes

### EXHIBIT CENTER

- ✓ 140' by 280' indoor arena
- ✓ Seating for 600
- ✓ Easy access to livestock pavilion
- ✓ Lobby, restrooms, meeting rooms and offices
- ✓ Kitchen and concession area
- ✓ Roping chutes

Ceiling height = 19' to large fans 25' to roof.

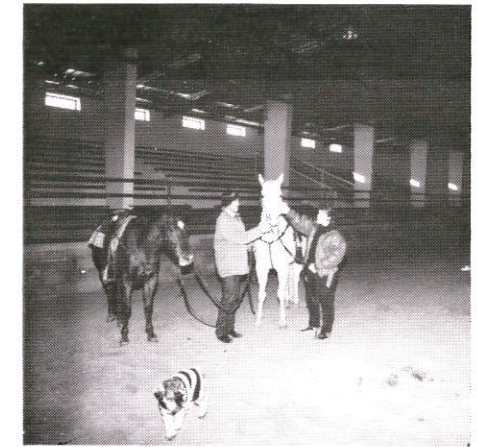
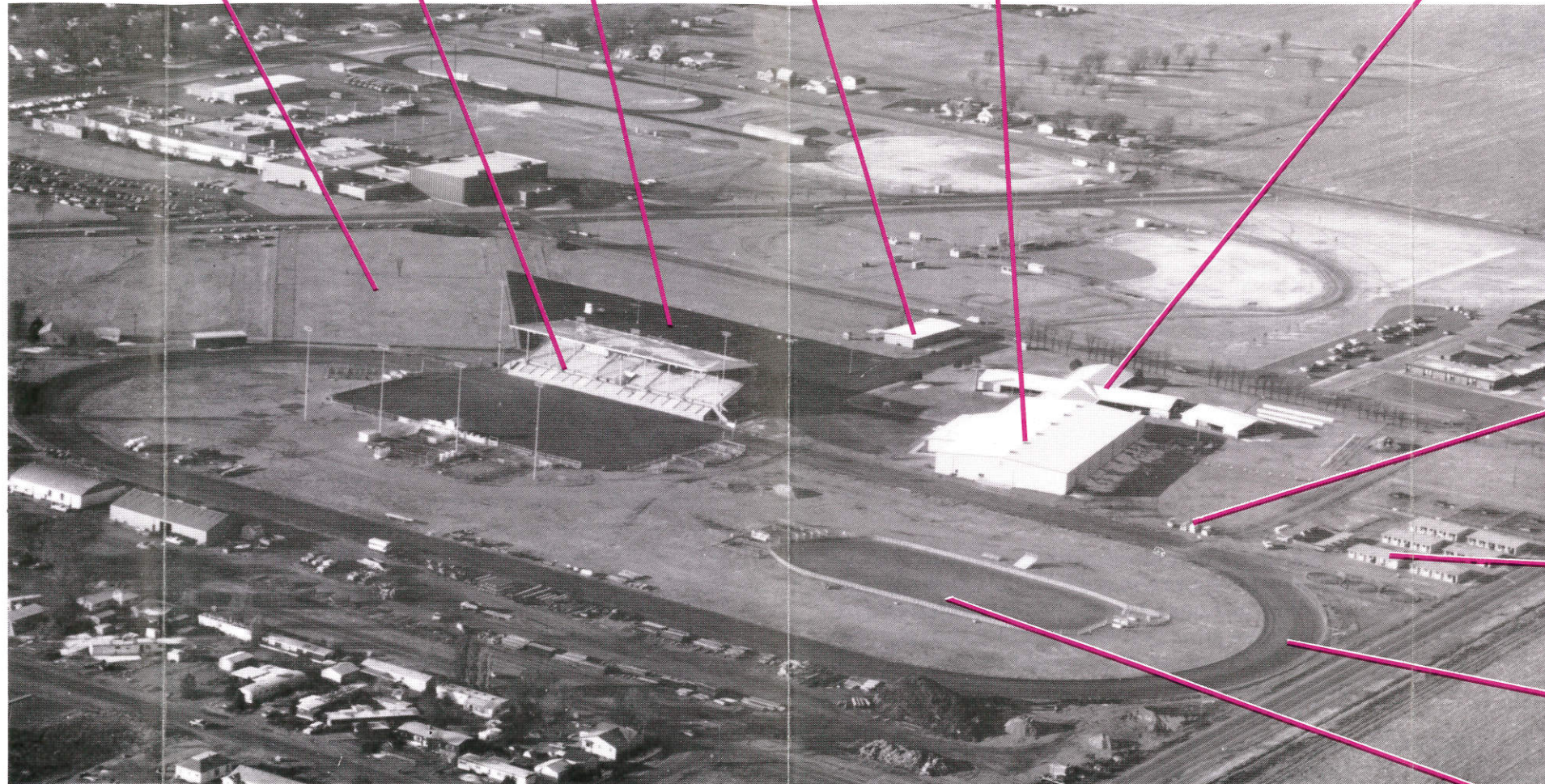
### LIVESTOCK PAVILION

- ✓ Animal stalls (cattle, sheep & hog show facilities)
- ✓ Wash area for livestock
- ✓ Electric grooming area
- ✓ Center sale arena with seating
- ✓ Livestock scale

### LARGE BLACKTOP MIDWAY AREA

### GARY DeSOTO BUILDING

### LARGE PARKING LOT AREA



### R.V. & TRAILER

- ✓ Electric and full hook-ups
- ✓ Bath house and shower

### HORSE AREA

- ✓ Stalls
- ✓ Covered portable horse stalls
- ✓ Accessible parking

### WORKOUT TRACK

# LOGAN COUNTY FAIRGROUNDS

## STERLING, COLORADO

### NORTH ARENA

- ✓ Electricity and water access
- ✓ Roping chutes
- ✓ Bucking chutes